



LIGHTWALLTRAP®

Absorbent Panel

This panel is related to the Mellowalltrap® and the Walltrap® panels, as it is an absorption panel to be applied on walls and ceilings that predominantly absorbs in the medium range of the sound spectrum.

The similarities end there as its size, technical characteristics and respective type of mounting are quite different.

It is an acoustic panel that absorbs medium frequencies and has been developed for use in small rooms.

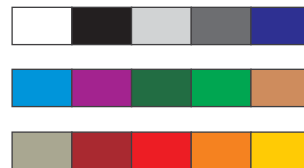
This product is manufactured with raw materials of different mass and density which are duly coupled in order to increase its absorption coefficient as much as possible.

Several panels can be assembled together with surprising results. As regards its size, it is one of the most effective panels available in the market.

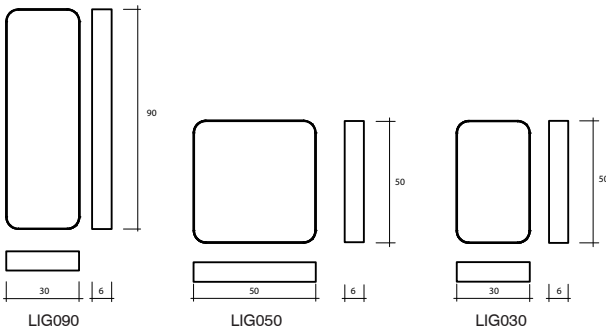
Features:

- Uses 65% of recycled materials.
- To apply in large rooms
- NRC : 0.73.
- 100% recyclable.
- Fire-resistance: M2.
- Package: unit.
- Installation: accessories included.

Standard Colours:



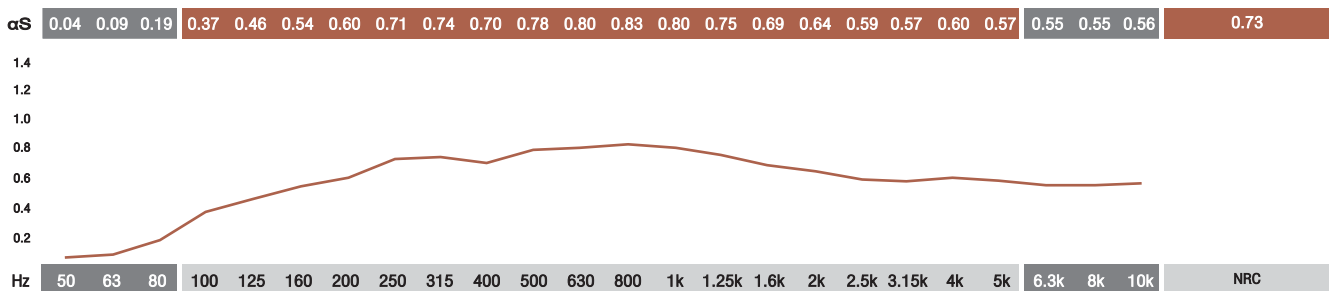
Technical Drawing:



Models:

	H	W	D	Kg
LIG090	90 cm	30 cm	6 cm	3,2
LIG050	50 cm	50 cm	6 cm	2,6
LIG030	50 cm	30 cm	6 cm	1,4

- Absorption Coefficient:



— ABSORPTION COEFFICIENT: Values in accordance with the standards: EN 20654, ASTM C423 and EN 11654.

■ Values (<100Hz and > 5K) are Non Standard Values.